

# The Horton STORY

Over 35 years ago, Donald R. Horton had a vision of livable and affordable new homes built with unmatched efficiencies and uncompromising quality, of family traditions passed on to new generations and of a business that would grow by making customers' dreams a reality.

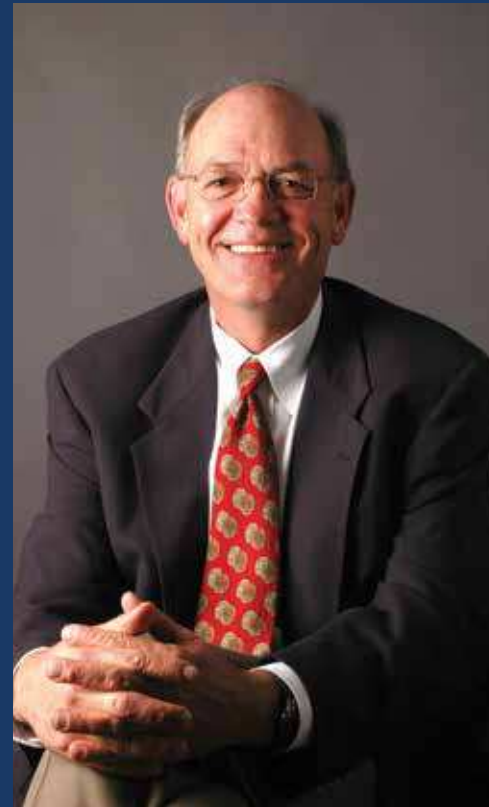
That philosophy of creating value every step of the way was the Company's signature focus when Horton unveiled his first neighborhood in the Dallas/Ft. Worth area over three decades ago.

As the Company grew from a local homebuilder, to a regional homebuilder, to ultimately the largest homebuilder\* in the United States, that philosophy has never wavered.

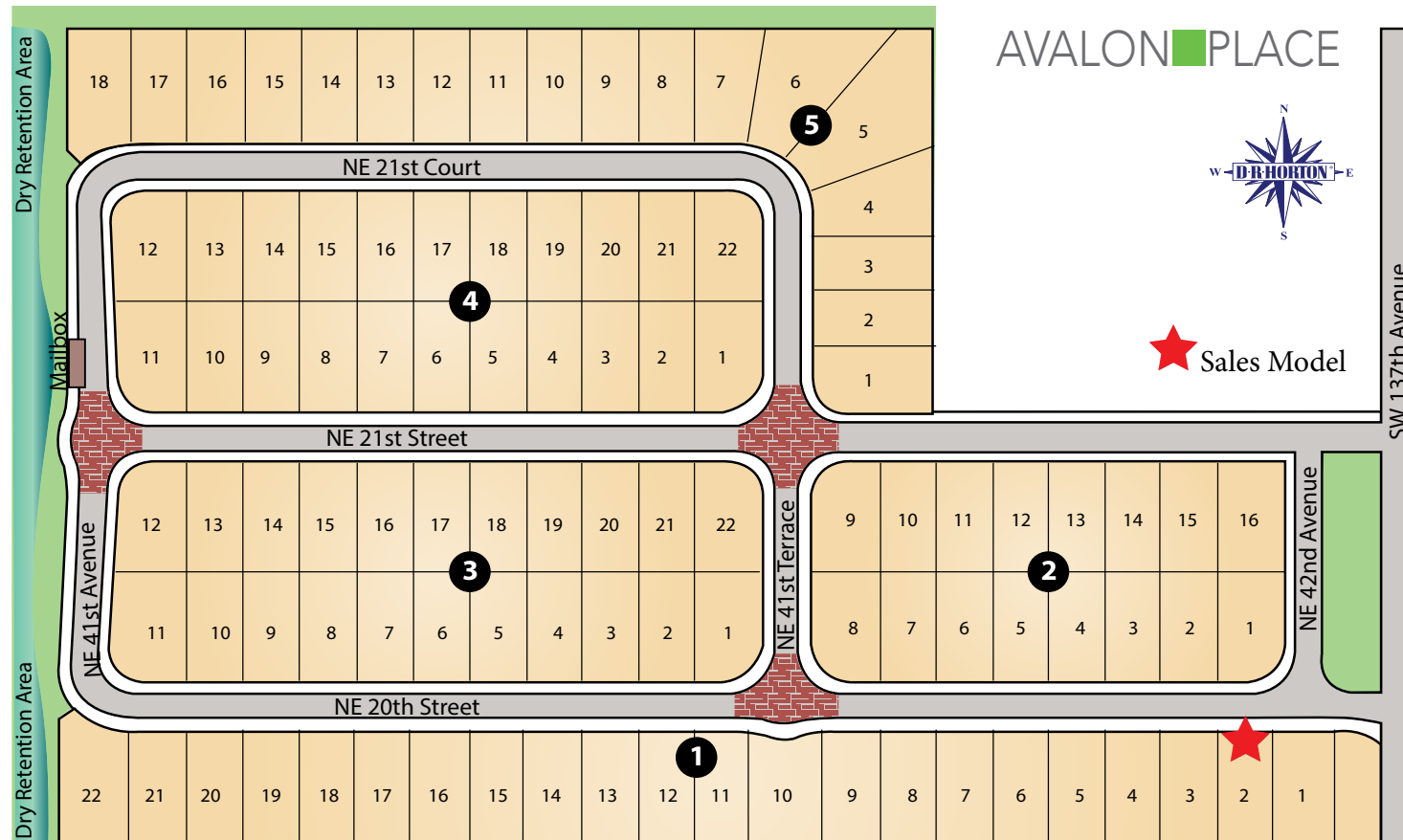
Today, D.R. Horton continues to demonstrate its leadership in residential development through design innovation, superior craftsmanship, and responsiveness to the needs of its customers.

The simple vision that began over 35 years ago represents years of value and security when you choose America's Builder to make your dreams come true.

\*As reported by Builder magazine.



## Community SITEPLAN



## AVALON PLACE

THE NUMBER ONE HOME BUILDER IN AMERICA SINCE 2002<sup>2</sup> BY VOLUME

New Single-Family Homes from the high \$200s\*



**SELLING FROM OUR LAKE VICTORIA SALES CENTER:**  
28323 SW 132 Avenue, Homestead, FL 33033

**DIRECTIONS:** Florida Turnpike, South to SW 288th Street (Biscayne Drive, exit 5). Head east to SW 132nd Avenue and turn left. Community on the right.

**D·R·HORTON**  
*America's Builder*



Builder reserves the right to make reasonable modifications to the plans and specifications, including house orientation on lot and reversal. Drawing is artist's rendering and is approximate for illustration purposes only and is subject to change without notice or obligation.



\*Home and community information, including pricing, included features, terms, availability and amenities are subject to change or prior sale at any time without notice or obligation. Pictures, photographs, features, colors and sizes are approximate for illustration purposes only and will vary from the homes as built. 11/15

# Included FEATURES

# Admiral

3 Bedrooms, 2 Baths, 2-Car Garage

## STRUCTURAL

- Reinforced 2500 psi concrete monolithic foundation slab
- Concrete block exterior walls on first and second floors
- Professionally engineered roof and floor trusses with hurricane clips and bracing
- Durable metal garage door
- Hurricane storm panels
- Embossed insulated 8' front door

## PLUMBING

- Elongated commodes throughout
- Pedestal sink in powder room (per plan)
- Moen® bathroom faucets throughout
- CPVC plumbing water lines
- 50 gallon insulated water heater
- Icemaker line with shut-off valve
- Exterior hose bib connections in front and rear for convenience
- Washer/Dryer hookup

## ELECTRICAL

- Square D® surge protection on all major appliances
- Pre-wired for ceiling fans with switches in all bedrooms and family room
- High speed structured wiring for 4-line phone, video and computer
- Includes CAT-5 data lines in master bedroom and kitchen and RG-6 quad shield coaxial cable in all the bedrooms and family room or great room
- Electrical smoke detectors with battery back-up
- Carbon monoxide detector
- Two-car garage with automatic door opener
- Exterior weather proof outlets (G.F.I.) in front and rear
- Decora switches and outlets throughout
- Minimum 200-amp electrical panel with circuit breakers
- Copper wiring in the interior of the home

## MECHANICAL

- Carrier® 14.5 SEER central A/C and heating system with programmable digital thermostat

## ENERGY-SAVING FEATURES

- R-30 blown insulation above all air-conditioned living space
- R-11 BATT insulation between interior wall and garage wall
- R-4.1 insulated exterior masonry walls

## INTERIOR FINISHES

- Knockdown textured finish on walls and ceilings (bathrooms excluded)
- 2-panel Cheyenne interior doors
- Colonial style baseboards throughout
- Satin nickel interior door levers throughout
- Satin nickel keyed entry handle set
- Vinyl-coated ventilated shelving in all closets
- 18" x 18" Ceramic tile flooring in Foyer, Kitchen, and Laundry
- Luxurious wall-to-wall carpeting in a variety of designer colors (installed over dense padding)

## EXTERIOR FINISHES

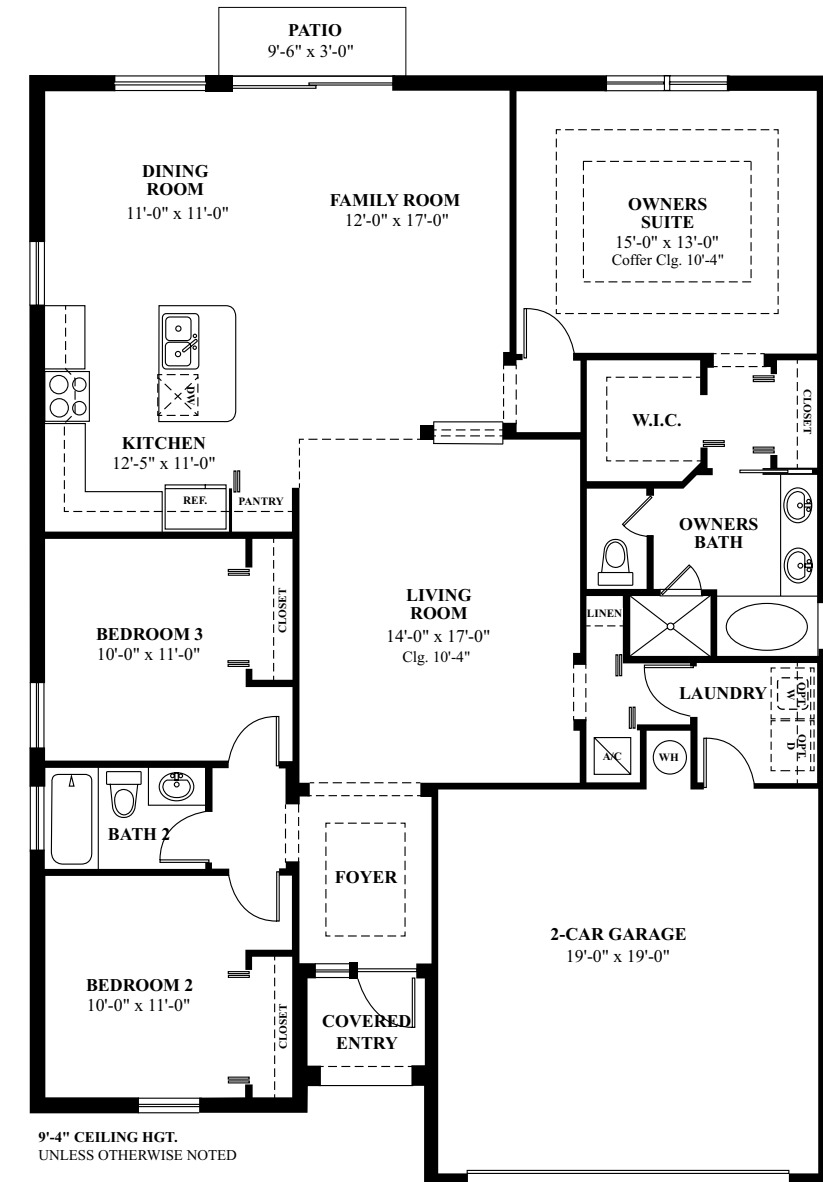
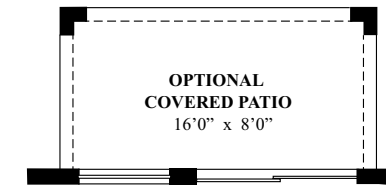
- Two architecturally designed exterior elevations available with each floor plan
- Choice of exterior color schemes
- White aluminum framed windows
- Decorative exterior coach lights on garage
- Automatic irrigation system
- Fully sodded homesites with professionally designed landscaping
- Paver driveways, entry walkways, and patios
- Gutters in front area of driveway and entry walkway
- Baked in color through cement "S" type roof tiles

## KITCHEN & BATH

- GE® Appliance Package:
  - Glass top range with self cleaning oven and microwave
  - 22 cu ft. side by side refrigerator with ice maker
  - Five-cycle dishwasher
- Quality crafted custom designed flat paneled wood cabinets with 36" uppers and concealed hinges in the kitchen
- Granite countertop with built up edge
- Double compartment undermount stainless steel kitchen sink with Moen® single lever faucet
- Deluxe 1/3 hp in-sink garbage disposal
- Choice of 12" x 12" ceramic tile floors and bath shower walls
- All baths with adult height custom designed cabinets
- Cultured marble vanity counters
- Full vanity mirrors in all baths

## QUALITY ASSURANCE

- Closing cost incentives (when using preferred lender for financing & DHI Title)\*
- Personalized New Homeowner Orientation
- D.R. Horton 1-Year Warranty
- 10-Year RWC™ warranty to protect your investment
- 10-Year Carrier® limited warranty



AVALON PLACE

Total A/C Sq. Ft. .... 1,636  
 Covered Entry ..... 30  
 2-Car Garage ..... 460  
 Total Sq. Ft. .... 2,126



Pictures, photographs, features, colors, drawings, floor plans, square footages and sizes are approximate for illustration purposes only and will vary from the homes as built. All drawings are the artist's concept.

\*Not all buyers will qualify. Not redeemable for cash. All terms and conditions subject to credit approval, market changes and availability. Buyers are not required to finance through preferred lender as a condition of purchase or access to settlement services. Included features subject to change without prior notice or obligation, as a result, please consult with one of our sales representatives for the latest community information. Home and community information, including pricing, included features, terms, availability and amenities are subject to change or prior sale at any time without notice or obligation.

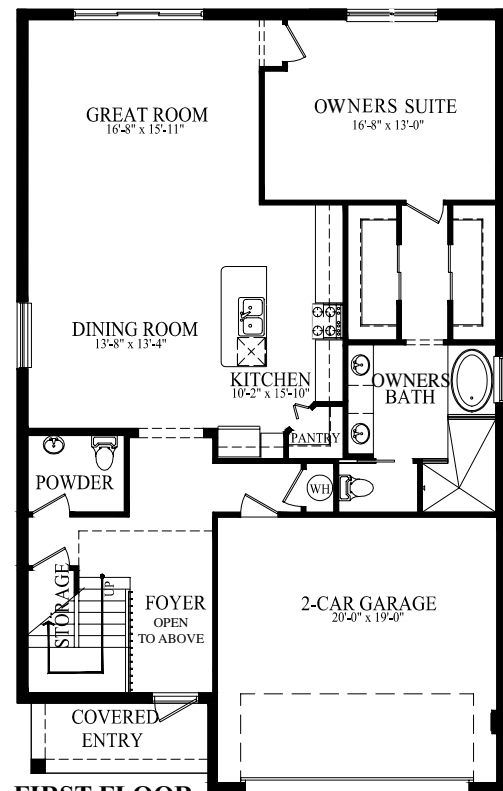


# Monroe

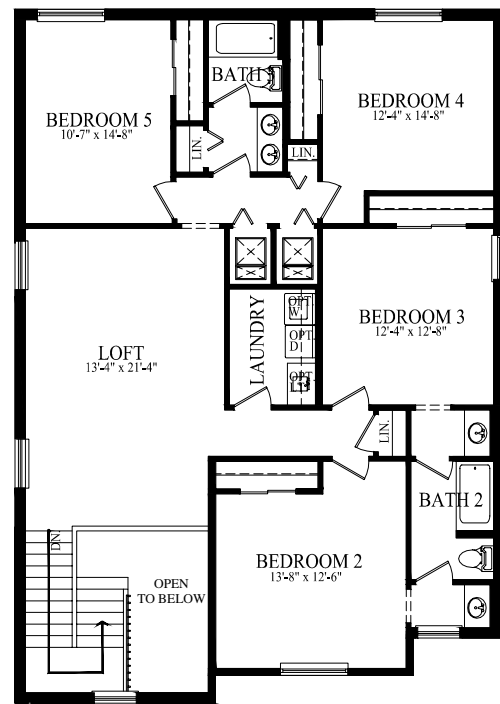
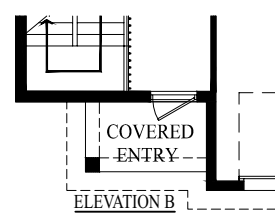
5 Bedrooms, 3½ Baths, Loft, 2-Car Garage

# Dolphin

5 Bedrooms, 3 Baths, 2-Car Garage



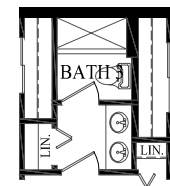
**FIRST FLOOR**  
10' CLG.



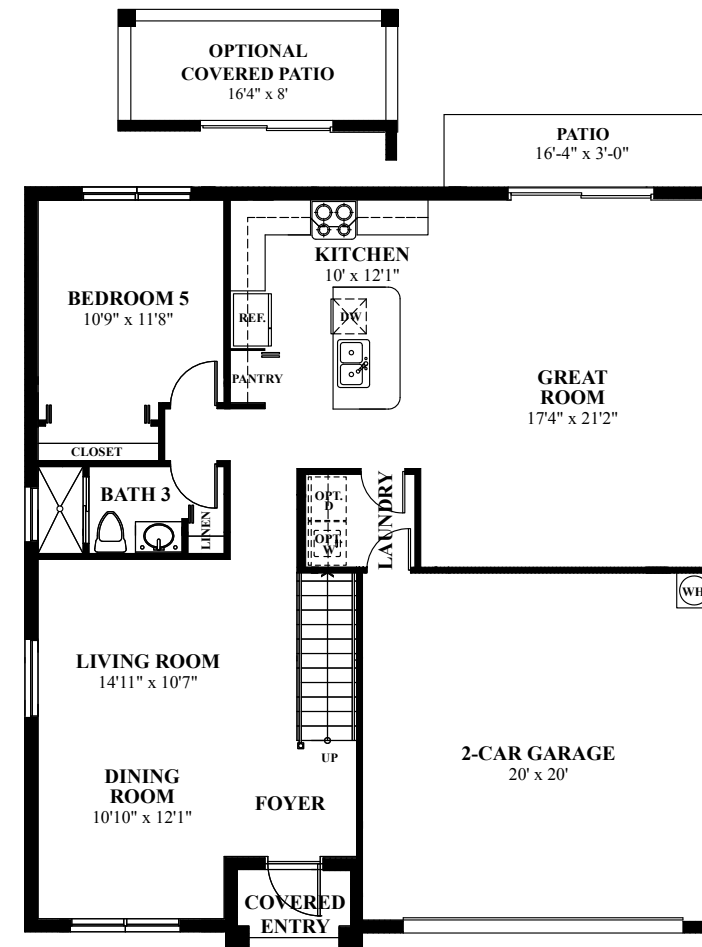
**SECOND FLOOR**  
9'4\"/>



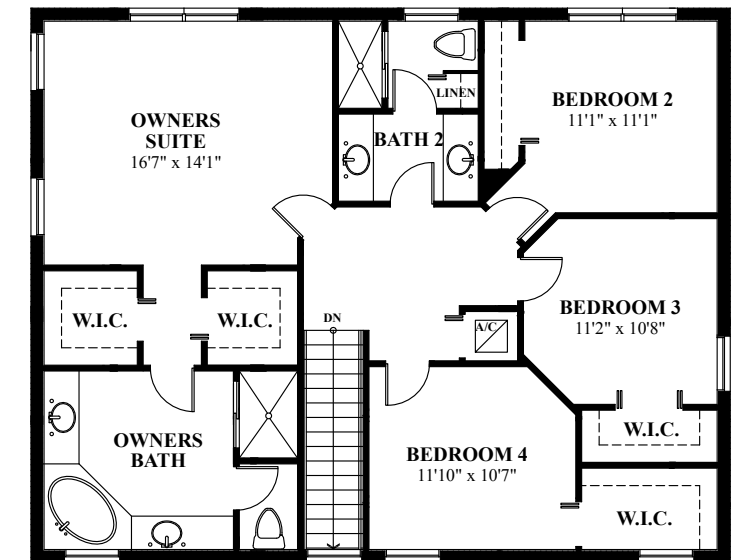
**BATH 2  
SHOWER OPTION**



**BATH 3  
SHOWER OPTION**



**FIRST FLOOR**  
9'-1\"/>



**SECOND FLOOR**  
9'-4\"/>

First Floor A/C Sq. Ft. ....	1,462
Second Floor A/C Sq. Ft. ....	1,588
<b>Total A/C Sq. Ft. ....</b>	<b>3,050</b>
Covered Entry .....	63
2-Car Garage .....	412
<b>Total Sq. Ft. ....</b>	<b>3,526</b>



Pictures, photographs, features, colors, drawings, floor plans, square footages and sizes are approximate for illustration purposes only and will vary from the homes as built. All drawings are the artist's concept.

First Floor A/C Sq. Ft. ....	1,260
Second Floor A/C Sq. Ft. ....	1,274
<b>Total A/C Sq. Ft. ....</b>	<b>2,534</b>
Covered Entry .....	31
2-Car Garage .....	430
<b>Total Sq. Ft. ....</b>	<b>2,995</b>



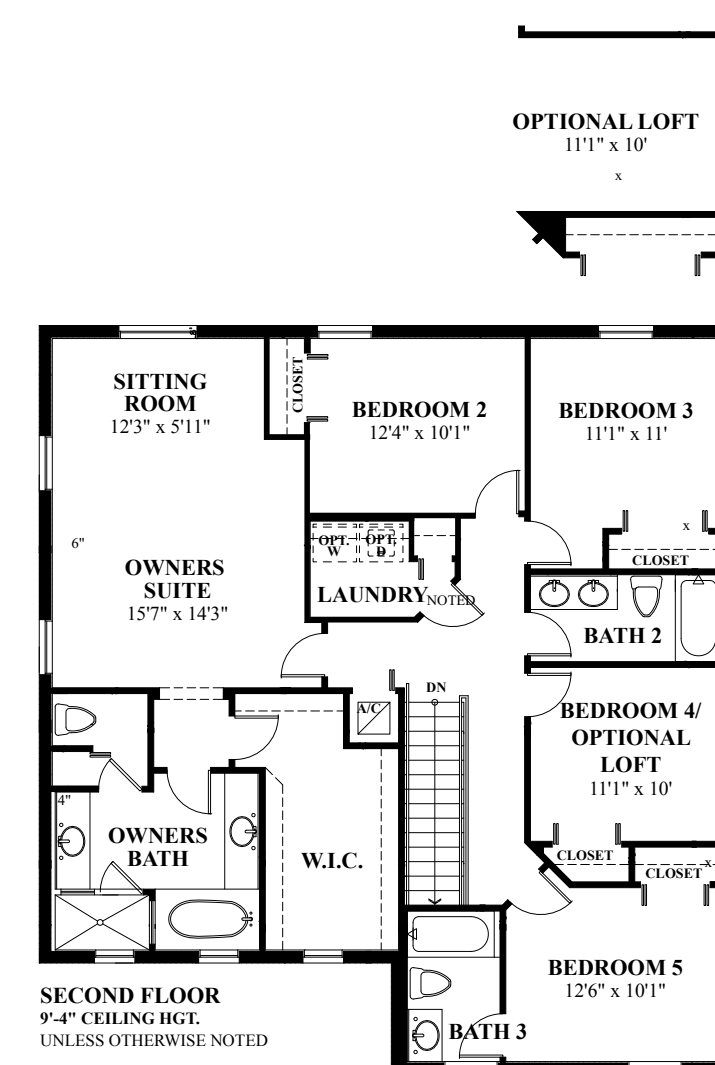
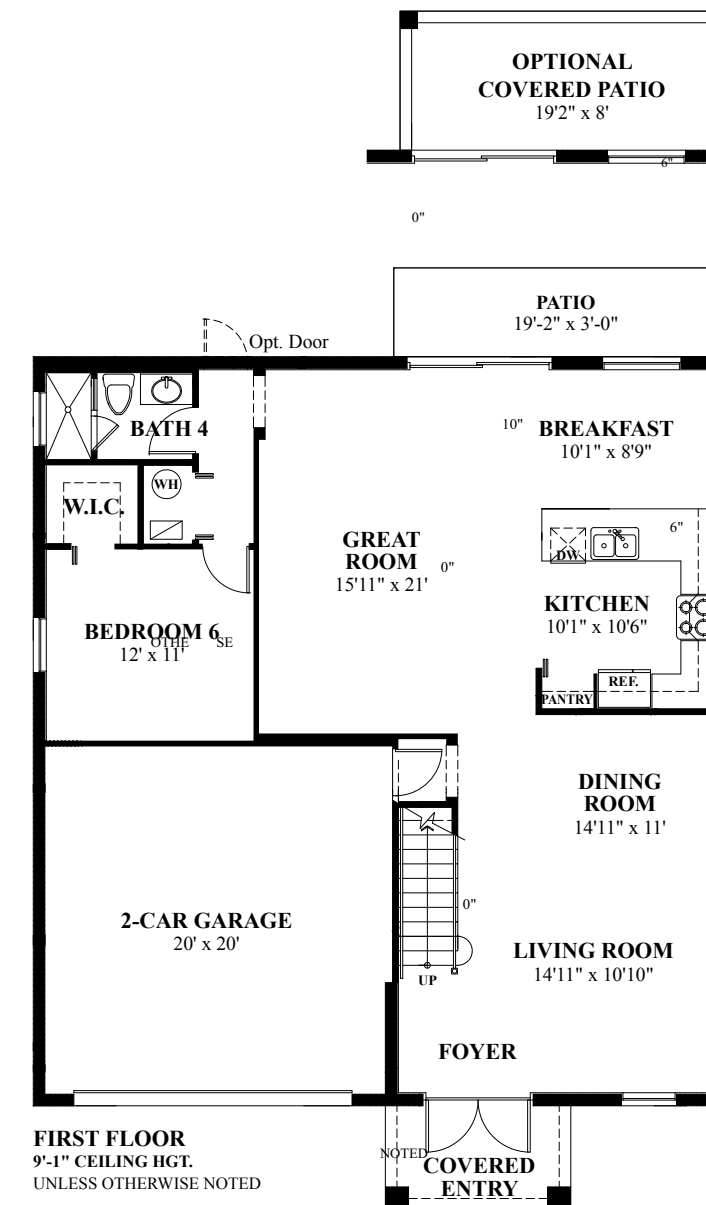
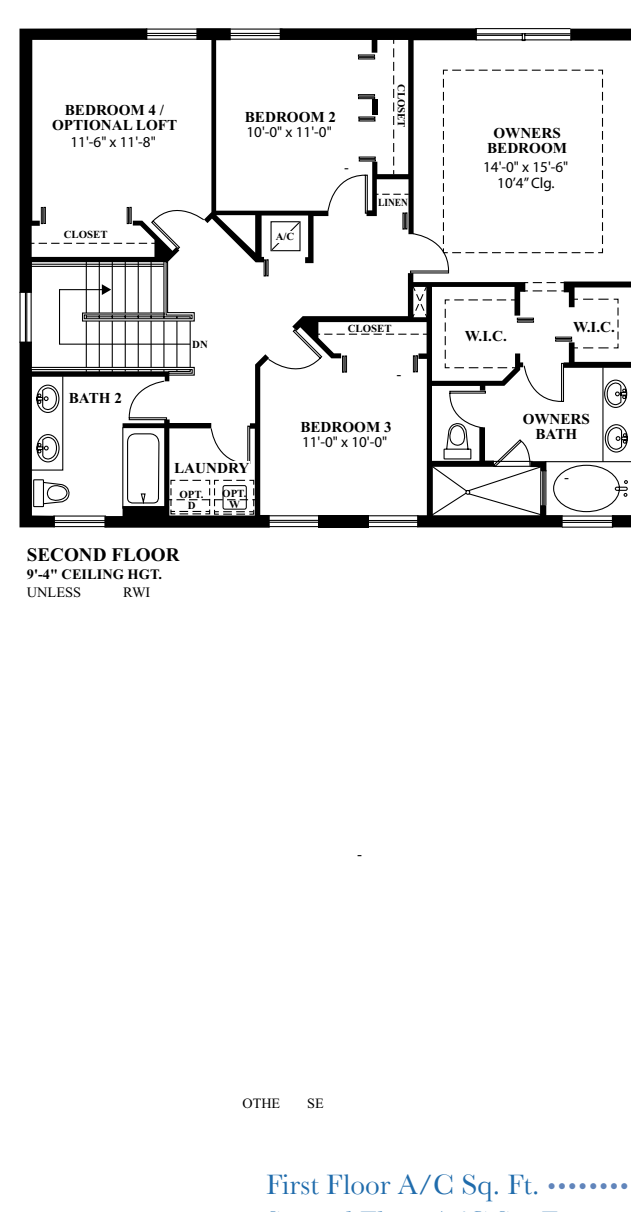
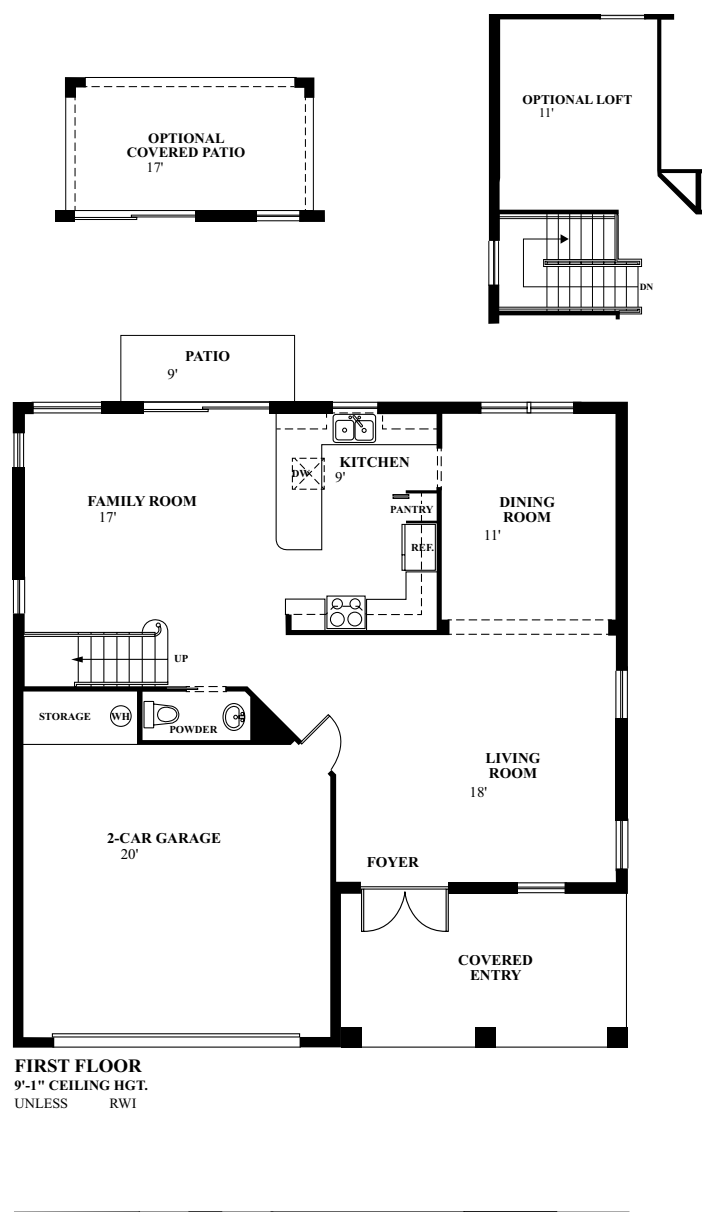
Pictures, photographs, features, colors, drawings, floor plans, square footages and sizes are approximate for illustration purposes only and will vary from the homes as built. All drawings are the artist's concept.

# Crestview II

4 Bedrooms, 2½ Baths, 2-Car Garage

# Edgewater

6 Bedrooms, 4 Baths, 2-Car Garage



First Floor A/C Sq. Ft. .... 1,082  
 Second Floor A/C Sq. Ft. .... 1,215  
**Total A/C Sq. Ft. .... 2,297**  
 Covered Entry ..... 60  
 2-Car Garage ..... 410  
**Total Sq. Ft. .... 2,767**

First Floor A/C Sq. Ft. .... 1,299  
 Second Floor A/C Sq. Ft. .... 1,593  
**Total A/C Sq. Ft. .... 2,892**  
 Covered Entry ..... 64  
 2-Car Garage ..... 424  
**Total Sq. Ft. .... 3,380**